

Farnese VII Plan floor plan in Cobblestone on Palmer Ranch Community

Base configuration:

1 story, 2,100 sq. ft. (approx.), Starts at \$404,900

2 bedrooms, 2.5 bathrooms, 2-car garage

The Farnese is a home with two bedrooms, two and a half baths and a two-car garage. Other great features include a formal dining room, a covered lanai with an optional casita, a nook off the kitchen and a flexible room. The kitchen opens into a large great room which allows for being part of the group while keeping an eye on what's happening with food preparation. The home has 2,889 sq. ft. in total.

Farnese VII Plan Exterior views



Elevation FARNESE-A_s8



Elevation FARNESE-C_s10



Elevation FARNESE-B_s9

taylor
morrison

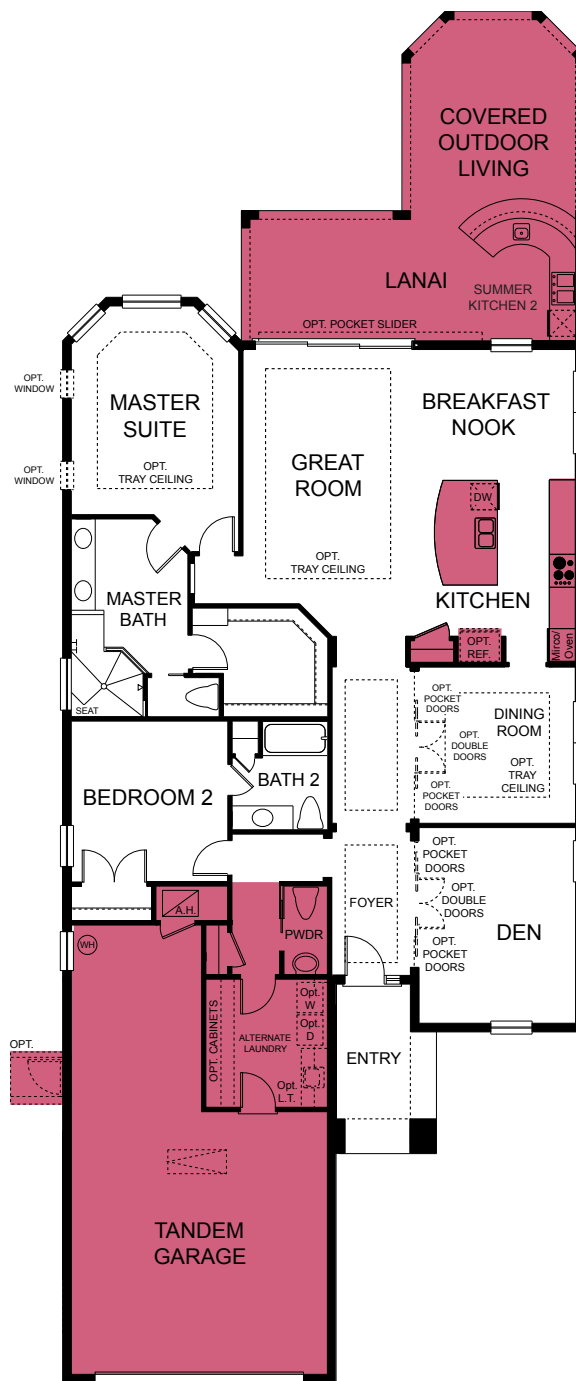
Homes Inspired by You



inspired by you.

Farnese VII Plan 2,100 SQ. FT.

FIRST FLOOR



taylor
morrison

Homes Inspired by You



Offer void where prohibited by law. All information (including, but not limited to prices, availability, incentives, floor plans, site plans, features, standards and options, assessments and fees, planned amenities, programs, conceptual artists' renderings and community development plans) is not guaranteed and remains subject to change or delay without notice. Maps and plans are not to scale and all dimensions are approximate. Please see a Taylor Morrison sales associate for details and visit www.taylormorrison.com for additional disclaimers. © July 2015. All rights reserved.